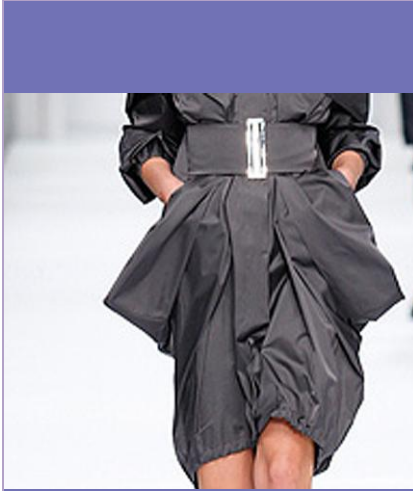


CUSTOMER SNAPSHOT



KEY HIGHLIGHTS

INDUSTRY: Fashion

MARKET

Luxury apparel and accessories

CHALLENGE

Saving time during the pattern making process without compromising quality

LECTRA SOLUTION

Modaris ExpertPro, part of the Modaris® range.

ENVIRONMENT

High-end apparel, accessories, and footwear company looking to streamline and improve the pattern development process

“Modaris ExpertPro has completely transformed our approach to pattern-making. It has enabled us to save time and reduce our development costs. We now construct basic blocks on the screen which can be reused later for other patterns. We can also associate different pattern-making elements using the dependency function. This is very valuable, particularly for a company such as Céline. Through these features we maintain a certain method and logic to the way our patterns are constructed, regardless of the person in charge of their development.

Our pattern pieces can now undergo improved verification and finishing processes so we obtain higher quality in our patterns—and hence in our finished products—in a shorter amount of time. Modaris ExpertPro has helped us improve productivity while maintaining the same number of pattern-makers. I could no longer imagine working without it.”

*Jean-Pierre Chevestre
Manager of Lectra Services, Céline (France)*

CÉLINE

Since its inception in 1945, Céline has rapidly acquired an extraordinary renown and developed a loyal customer base.

The brand’s reputation is based on the excellent quality of the luxury ready-to-wear clothing, footwear, and accessories it produces and retails in stores worldwide.

The famous Céline double C logo was adopted as the company’s emblem in the seventies and has become synonymous with excellence, quality, and creativity.

The firm’s founder, Céline Viapiana, was known for a close attention to detail, a love of fabrics and textiles, and an eye for perfect finishings.

Céline’s products still reflect these values and are created with an independent, feminine, and discerning woman in mind.

ABOUT LECTRA

Lectra is the world leader in integrated technology solutions that automate, streamline, and accelerate product design, development, and manufacturing processes for the soft goods industries. Lectra develops the most advanced specialized software and cutting systems and provides associated services to a broad array of markets including fashion (apparel, accessories, footwear), automotive (car seats and interiors, airbags), aeronautical, marine, and furniture. Lectra serves 20,000 customers in more than 100 countries with 1,550 employees. The company is listed on Euronext Paris.