

GERBER ACCUMARK PE

What's New Fall 2023 / V16.1

Date: Fall 2023

COPYRIGHT

Gerber AccuMark 2D © 2023 Lectra SA and its affiliates. All rights reserved.

This document may not be reproduced by any means, in whole or in part, without the written permission of the copyright owner.

This document is part of the proprietary articles furnished to document Lectra SA and its affiliates support for Gerber AccuMark.

In consideration for the furnishing of the information contained in this document, the party to whom it is given assumes its control and custody and agrees to the following:

The information contained herein is given in confidence and any part thereof shall not be copied or reproduced without the written consent of Lectra.

This document or the contents herein under no circumstances shall be used in the manufacture or reproduction of the articles shown, and the delivery of this document shall not constitute any right or license to do so.

TRADEMARKS

Gerber AccuMark, is a registered trademark of Lectra in the United States, all rights reserved. Other company names, brand names and product names mentioned in this document are trademarks or registered trademarks of their respective companies.

DISCLAIMER

The information contained in this document is subject to change without notice. Lectra SA and its affiliates shall not be liable for errors in this document or for incidental or consequential damages in connection with furnishing or use of this material, including, for example, loss of profits, fabric, and production time.

Contents

Highlights	5
1. V16.1 General Improvements	6
1.1 Model Editor Enhancements	6
1.2 CAD Relational Database - Number of Corners	7
1.3 Barcode Scaling	7
1.4 Bidirectional Cutting Enhancement	8
2. V16.1 Pattern Design Improvements	9
2.1 New Annotation Library	9
2.2 Create Smaller Annotation Character Size	11
2.3 Hide Images	11
2.4 Fabric Code with Image Labels	12
2.5 View Line Direction	13
2.6 Clip line Supports Multidimensional Grade	13
3. V16.1 Easy Marking Improvements	14
3.1 Piece Icon Selection	14
3.2 Marker View	14
3.3 New Theme for Easy Marking	15
4. V16.1 Lectra Digital Platform Integrations	17
4.1 Link to Lectra Digital Platform	17
4.2 New Kubix Link Integration – AccuMark Insight	20
4.3 Furniture and Fashion On Demand Integration Improvements	21
4.4 Cloud Nesting Improvements	23
5. V16.0 General Improvements	25
5.1 Alterations with Multi-Dimensional Grading	25
5.2 User Interface Updates	28
5.3 Conversions	32
5.4 Plotting Improvements for Annotation On Line	32
5.5 Updates to PERU	34
5.6 Gerber AccuMark Localization	34
5.7 Help/Documentation	35
6. V16.0 Pattern Design Improvements	36
6.1 View Alterations with Multidimensional Grade	36
6.2 Create Altered Size with Multidimensional Grade	36
6.3 Plot Altered Size with Multidimensional Grade	37
6.4 New Function to Clip Image	38

- 6.5 Maintain Fullness Objects When Modifying39
- 7. V16.0 Easy Marking Improvements40**
- 7.1 Relative Icon Size Preference40
- 7.2 PDF Supports Internal Line Label H for Digital Print Files41
- 7.3 Additional Options for Quick and Flex Nesting for AccuMark markers42

GERBER ACCUMARK®

WHAT'S NEW FOR FALL 2023

HIGHLIGHTS

For AccuMark V16.1 users will find the following improvements and new features added to streamline the production workflow and to provide even more integration points.

- Communicate consistently using the New Annotation Library
- Simplify pattern modification with ability to Hide Images
- View cutting direction using new Display Direction for internal and perimeter lines
- Transition from Classic to Easy Marking with new theme
- Integrations to Lectra 4.0 Offers such as Kubix Link and Fashion/Furniture On Demand
- Create splices automatically when saving nests from the optional Cloud Nesting offer

1. V16.1 GENERAL IMPROVEMENTS

1.1 Model Editor Enhancements

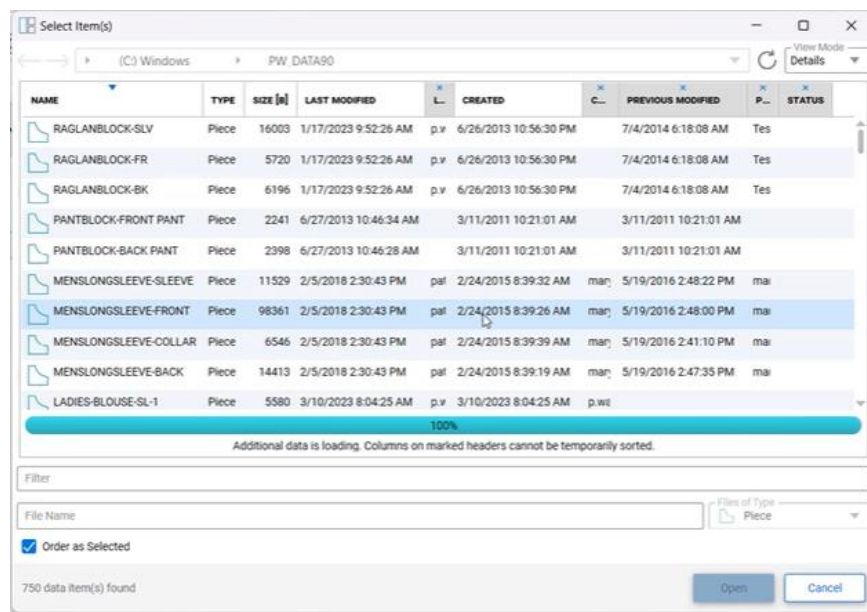
AccuMark users will find new capability to quickly create or edit Model Options, by copying entries from the main Model's Pieces tab to a Model Option. Copying and pasting rows can be accomplished, even if the column order and visibility differ between the tabs. The corresponding information can be copied and will be pasted into the appropriate column. Users may choose to copy and paste entire rows or individual cells.

New in V16.1, users in a network environment now have the ability to share Fabric Tables and Avatars. A model's Fabric table and Avatar are no longer restricted to a local location, and now may be stored on a network drive. The default paths for these files are set in the AccuMark Explorer File Options on the User Settings tab.

The responsiveness of the Model Editor piece look up has also been improved in this version. With the addition in prior versions of information such as stage, the browse dialog did not display as quickly as prior to the additional data fields. In this update, while the information is being loaded in the background users will not be able to sort on this data, but the look up can be used to choose pieces and browse for data.

For storage areas with large amounts of data, while the list is being built in the background users may still select pieces and review the items in the storage area, but the columns may not be immediately available to resort the items.

Columns that have information remaining to be loaded will display with a gray header. Users may still navigate to select data items while the information is being loaded. A message will display to indicate additional information is being loaded.



1.2 CAD Relational Database - Number of Corners

Users who have configured a CAD Relational Database will find that a new column has been added to the Cad_Piece_Details table.

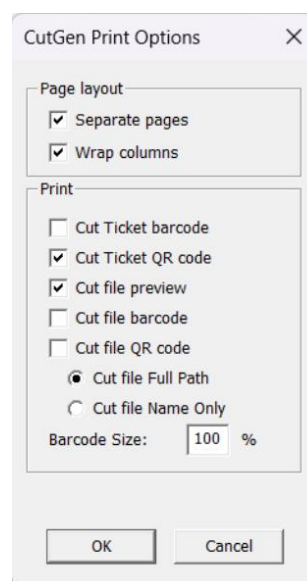
This new column, Piece_Number_Corners, displays the information for the number of corners on pieces and will now be found when running a SQL query. Previously this information was only available in the AccuMark Piece Report.

When saving data to a SQL Storage Area with the Relational Database configured, the new column will be added automatically to the existing database.

	Piece_Code	Piece_Name	Piece_Description	Piece_Category	Rule_Table_Name	PiecePosition	mPiece_Area	mPiece_Perimeter	Piece_Number_Corners
1	1	JACKETBLOCK-BACK	CUT 1 SELF	BACK	XS-2XL	0	1877.8915	189.5048	6
2	2	JACKETBLOCK-FRONT	CUT 2 SELF	FRONT	XS-2XL	1	1857.4164	190.1438	7
3	3	JACKETBLOCK-SLEEVE	CUT 2 SELF	SLEEVE	XS-2XL	2	2432.9323	202.874	11
4	4	JACKETBLOCK C-HOOD	CUT 2 SELF	CENTERHOOD	XS-XL	3	636.0981	129.5786	7
5	5	JACKETBLOCK S-HOOD	CUT 2 SELF	SIDEHOOD	XS-XL	4	875.2742	115.9724	5
6	6	LADIES-BLOUSE-BK	CUT1	BACK	A1-LADIES	0	4160.0306	255.8794	10
7	7	LADIES-BLOUSE-COL	CUT2	COLLAR	A1-LADIES	1	303.5162	97.1823	8
8	8	LADIES-BLOUSE-CUFF	CUT2	CUFF	A1-LADIES	2	117.487	56.9986	4
9	9	LADIES-BLOUSE-FR	CUT2	FRONT	A1-LADIES	3	2344.552	216.6731	8
10	10	LADIES-BLOUSE-SL	CUT2	SLEEVE	A1-LADIES	4	2232.5424	183.6786	4
11	11	PANTBLOCK-BACK PANT	CUT 2 SELF	BACK	XS-XL	0	3538.0123	288.0151	5
12	12	PANTBLOCK-FRONT PANT	CUT 2 SELF	FRT	XS-XL	1	3335.2067	283.9712	7

1.3 Barcode Scaling

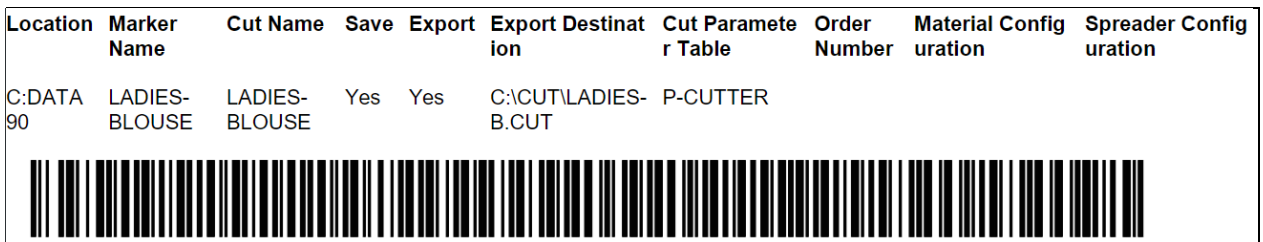
While generating cut data, users may also choose to create a cut file or cut ticket barcode. Sometimes rendering the file name as a barcode produces a code that may be difficult to scan due to the size of the image, a situation that may occur with long file names. The ability to scale the barcode has been added so that scanners will be able to more easily register the code.



The default value for scale is 100%, so users who currently do not have issues with the size of the barcode may continue without changing this field. Here is an example of a scaled barcode, 50%



To compare, here is the same barcode at 100%.

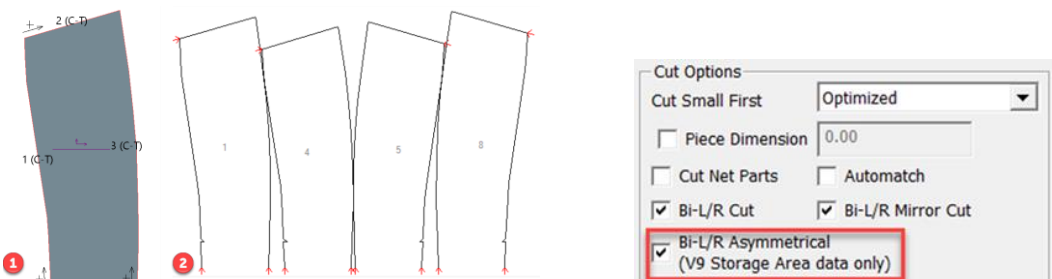


Additionally, sometimes when creating the barcode or QR code, some cutters require the full path, while others need only the file name as the cutter mapped drive is pointing to the cut file location. A new option has been added with the default of full path, but users may choose to have only the Cut File name.

1.4 Bidirectional Cutting Enhancement

Bidirectional cutting with a defined PDS Cut Sequence is now supported for folded or tubular fabrics. Cut sequence in PDS uses C and T point attributes to define the beginning and end of segments to cut, and the order in which those line segments are identified determine the line order for cutting.

Previously when a mirrored piece was folded and placed along the folded or tubular edge of the marker, the PDS defined cut sequence was not applied. Now, when using these attributes on pieces that are mirrored and folded, the line cut order will be followed. Use of this feature requires that the Cutter Parameter Table be set to the enable the Bi-L/R Asymmetrical option.



1. Pattern Design piece with defined cut sequence
2. Resulting cut file on a tubular marker

2. V16.1 PATTERN DESIGN IMPROVEMENTS

2.1 New Annotation Library

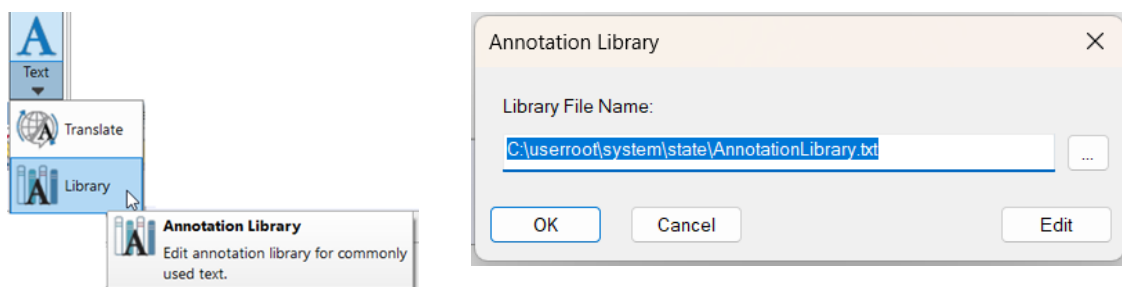
Save time by quickly adding common text to patterns and share the library within your organization to increase consistency and avoid communication errors.

Create and store common pattern text for development and production within the new AccuMark Annotation Library, and use this Library to add text with Annotation or Annotation on Line.

The Annotation Library is a text file, which can easily be edited to add the most commonly used phrases or details important within your production environment.

The default location for the AnnotationLibrary.txt is c:\userroot\system\state directory. The file may be stored to share in any network file location, allowing for consistency within the organization for annotation added to pieces.

To view or change the path of this Annotation Library file, select Annotation Library from the PDS Edit Tab, Library panel. In this example, the path is the default location, but using the browse button will allow users to store this file in a common network location.

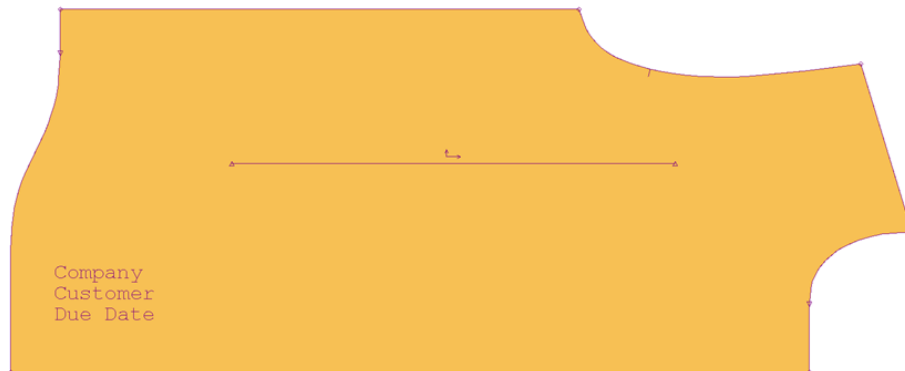
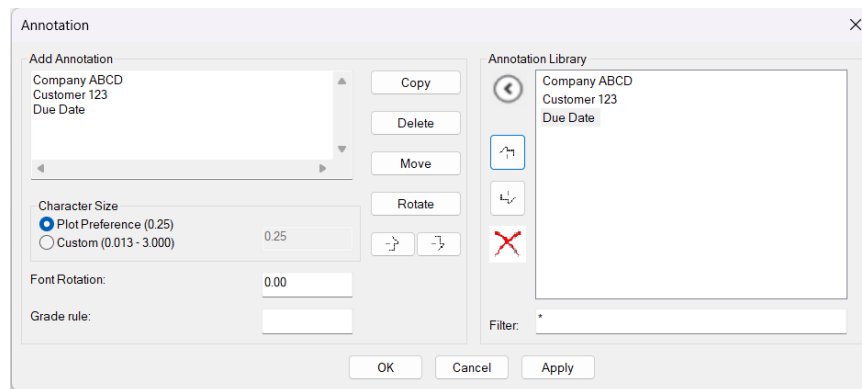


Clicking Edit will open the file in a text editor associated with text files, such as Notepad. Once any edits have been made and saved, the text from the Annotation Library is visible and can be used when creating or editing Annotation or Annotation on Line. Edits to the Annotation Library may also be made directly in the PDS Annotation dialog.

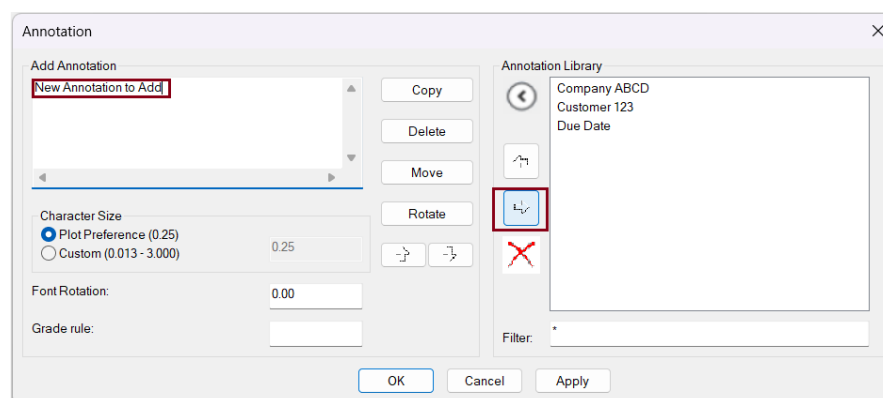
Entries added to the library appear in the dialog for Annotation and Annotation on Line. Add by selecting these entries from the right pane display and using the arrow key to send them to the Left pane for Add Annotation.

Annotation Library entries may be added/removed from pieces using the using the left and right arrow keys. The sequence for the annotation entries can be changed using the up and down arrows. The red X will remove the entry.

In this example, entries for Company, Customer and Due Date are added to the Annotation Library file and can be selected to add to pieces.



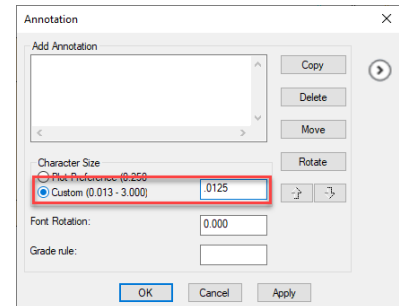
To add annotation to the library, simply use the arrow key to add text from the Add Annotation pane to the Annotation Library pane in this dialog box. In this example, new text will be added, “New Annotation to Add” by clicking the arrow to add the text to the Annotation Library.



Entering the character size for plotting, rotation of the text, and applying grade rules to the annotation can all be performed with fields in this dialog. The entries within the Annotation Library can be used alone or with additional user defined annotation on individual pieces.

2.2 Create Smaller Annotation Character Size

The custom character size range has been lowered to include a size range from .0125-3 inches (0.032-7.62cm). The smaller character size is helpful to ensure the annotation will fit within small pieces.

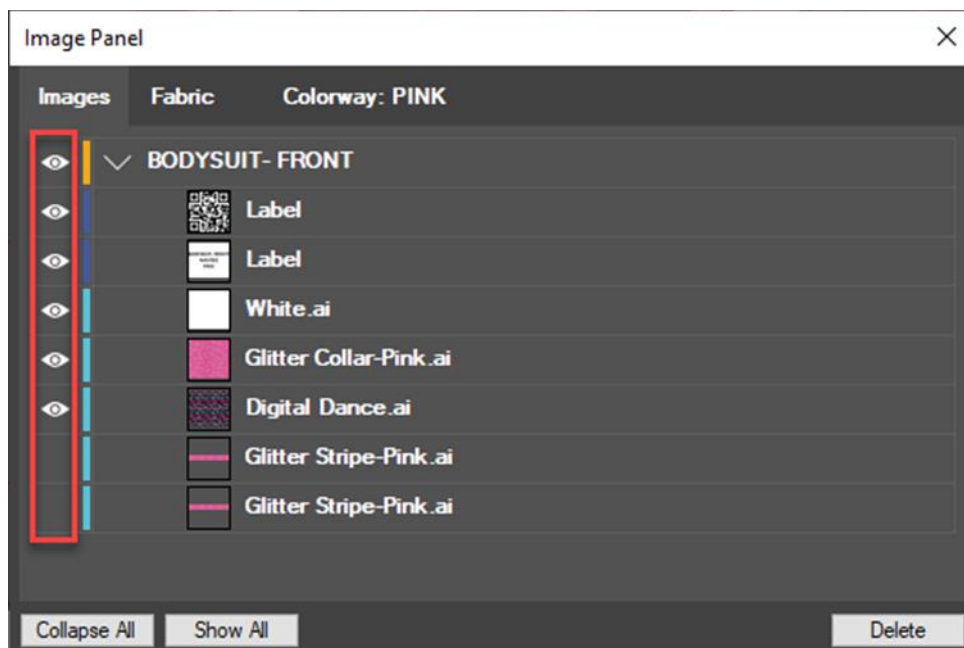


2.3 Hide Images

The new ability to Hide images allows simplified editing capability or design adjustments. The user interface design allows easy adoption to AccuMark image workflows with standard functionalities found in graphic programs.

The ability to Hide Images allows users to access particular elements of layered images for editing purposes. Also, users can easily create variations for digital printing. This functionality maintains 3D design elements using hide functionality for digital printing needs.

The Hide/Show option is available for all images types within the Image Panel. Hidden Images retain the saved status from development to production, allowing users to create and apply multiple digital print variations.



Locate the new icon in the Image panel. The feature is available and color coded for all image types: fabrics, trims, edges, and labels. Within the Image panel, the images are organized by piece.

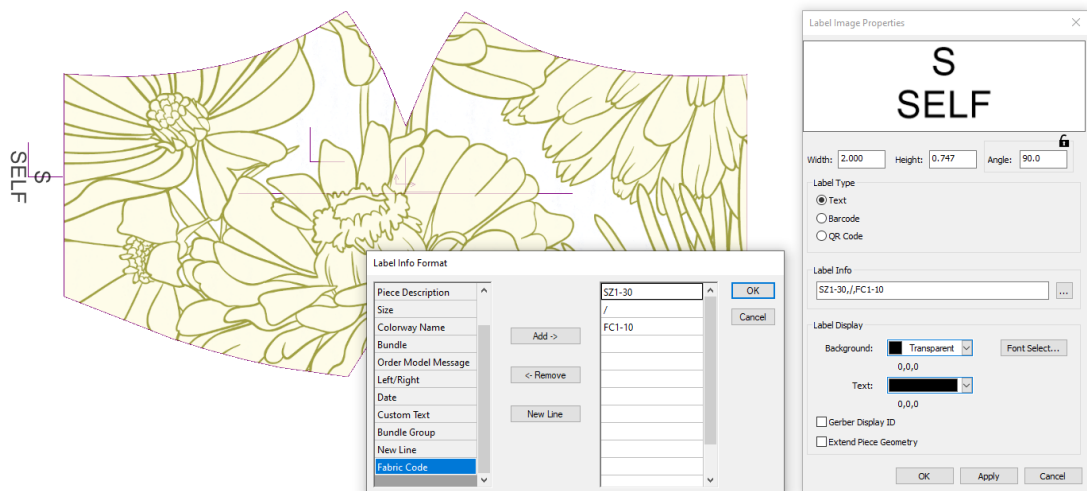
Saving the model will save the image display state and carry through production to marking, plotting, or printing. Hide Image allows more flexibility and options within a single model when working with images.

2.4 Fabric Code with Image Labels

A new Fabric Code identifier is added to the piece image label selection. This improvement helps visualize the materials needed to produce a product from design to production with digital printing.

To Add a Fabric Code to the Image Label:

1. Open Pattern Design and select Place Image (Image Type=Label) from the Image tab.
2. Use the lookup in the Label Info to open the Label Info Format dialog.
3. Left click on Fabric Code and press Add. The position of the fabric code within the label is defined by selecting the cell or using the New Line button.
4. Select OK once all information is selected.
5. You will now see the fabric code displayed within the image label on the piece.



2.5 View Line Direction

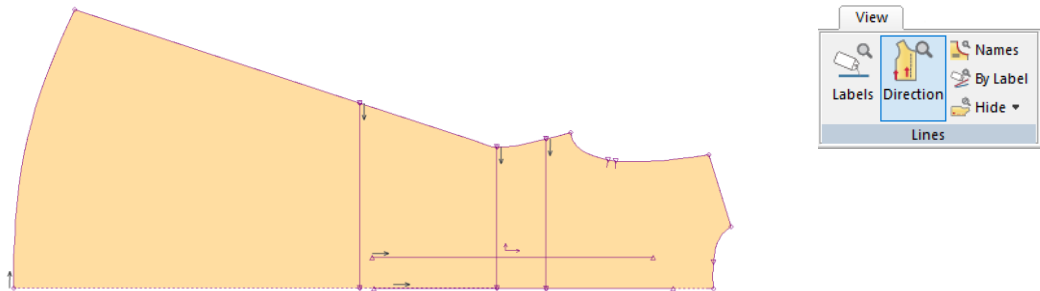
Direction, a new option in the View Panel, toggles the display of the internal line direction to validate cut direction, so that users can see this information and edit internal lines as needed.

When using pieces that were created by another user or re used from prior seasons, it may not be immediately apparent in which direction a particular line segment was created. This new view capability is very useful to provide information while making pattern modifications.

Select the Direction icon in the View tab to enable directional arrow display. Choosing the icon again will toggle the direction view off. This new capability will allow users to

- Understand internal cut direction to generate efficient cut files
- Improve visual feedback for the cut start location on piece perimeters

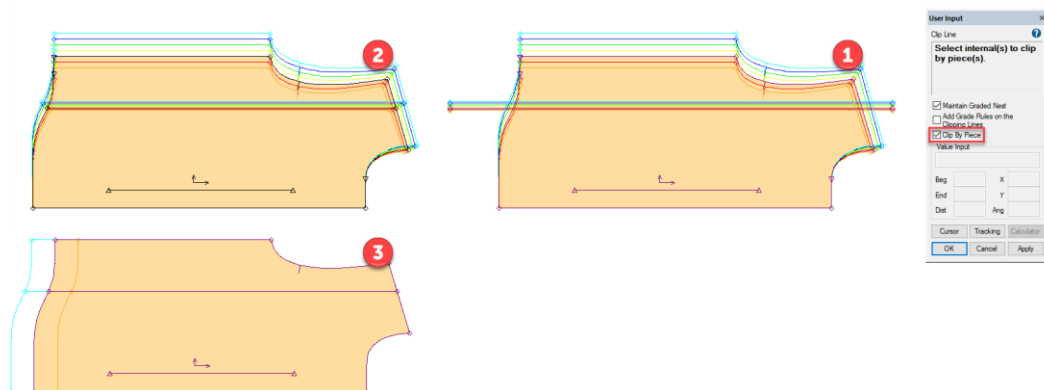
Users can display the line direction whether or not the internals are assigned to cut.



2.6 Clip line Supports Multidimensional Grade

Located in the Modify tab of Pattern Design, Clip Line quickly adjusts internal lines to intersect at a defined location. The option, Clip by Piece, allows the internal to clip at the perimeter locations.

In V16.1, Clip Line supports pieces with multidimensional grades. To use this update, ensure the internal line grade before using the clip function. Then select Clip Line and the option Clip by Piece. After selecting the piece, notice in steps 2 & 3 how the grade follows the defined grade dimension.



1. Piece prior to Clip Line with graded internal
2. View of D1 after Clip Line is applied with option Clip by Piece
3. View of D2 after Clip Line is applied with option Clip by Piece

3. V16.1 EASY MARKING IMPROVEMENTS

3.1 Piece Icon Selection

When selecting piece icons for placement into the marker workspace, the gap between the displayed items has been decreased to increase the work area. The images below depict the same marker quantities in version 16.1 compared to prior, with the reduction in space in both the rows as well as column displays.

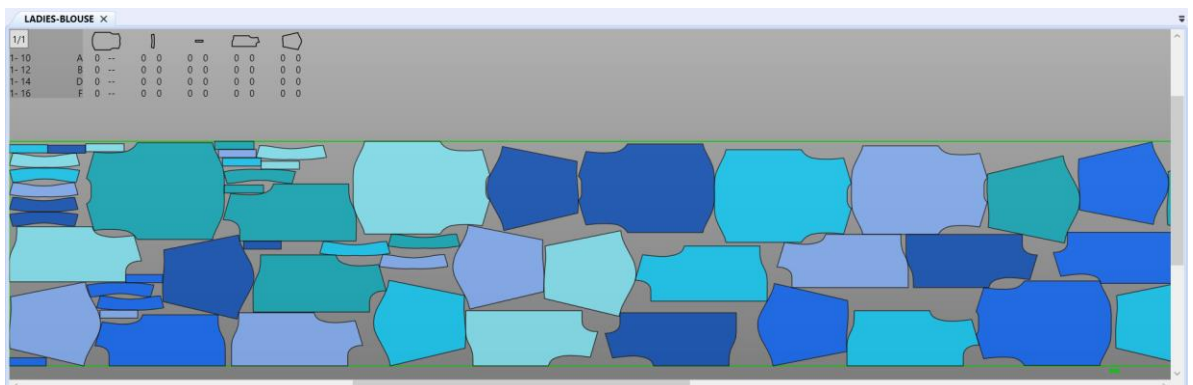
The icon margin sensitivity has been improved to allow users to more easily choose pieces to slide into place. If the marker is zoomed to overlap into the icon menu area, users will still be able to choose those pieces for placement.

16_1 PIECE ICON MENU X									
1/1									
1-10	A	1	--	1	1	1	1	1	1
1-12	B	2	--	2	2	2	2	2	2
1-14	D	2	--	2	2	2	2	2	2
1-16	F	1	--	1	1	1	1	1	1

16_0 PIECE ICON MENU X									
1/1									
1-10	A	1	--	1	1	1	1	1	1
1-12	B	2	--	2	2	2	2	2	2
1-14	D	2	--	2	2	2	2	2	2
1-16	F	1	--	1	1	1	1	1	1

3.2 Marker View

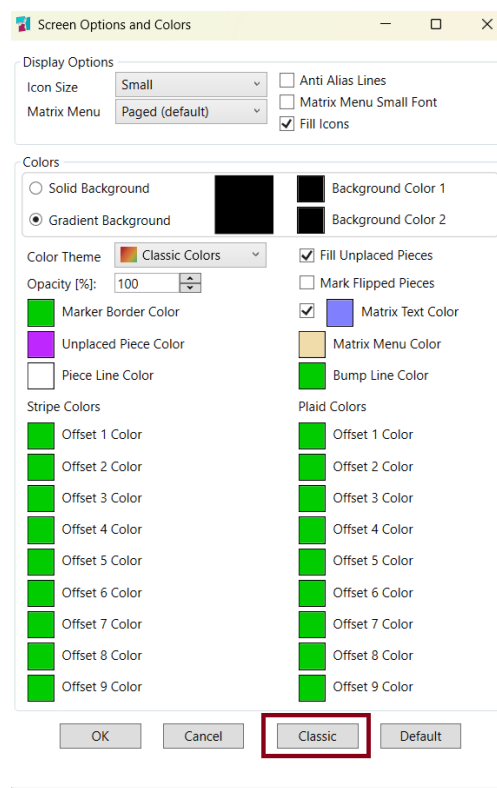
When selecting Full Length or Big Scale to change the view of markers in Easy Marking, the marker display will remain in the work area. This positioning maintains a space from the piece icon menu, allowing users to access the icons for selection without the pieces being overlapped into the marker display. In this example, the Big Scale display does not extend into the icon selection area.



3.3 New Theme for Easy Marking

A new User customizable theme to has been added to transition users from classic to Easy Marking. With this new theme, users will find increased marker workspace and a Classic color palette for various screen elements.

From the View Tab, choose Screen Options and Colors located in the Display Panel. When the dialog opens, choosing the “Classic” button will set the colors for background, matrix text, piece fill, borders, offsets, and piece line colors to the Classic Marking settings.



The ribbon menu will be collapsed and the thumbnail hidden to provide more screen area for the marker display. Users can select the Classic theme and then also make modifications – such as changing the icon display or any of the color options before clicking OK to save the changes.

Using options found in the View tab, other screen elements can additionally be hidden to gain more space for marking including the Marker Info bar.

Other general improvements have been made for Easy Marking to assist users in the transition away from Classic including a slight change in the cursor focus for Full Scale and the font display on pieces in the work area.



3.3.1 Classic Marking Sunset

Classic Marking has been removed in this version. Users will no longer have the option in AccuMark Explorer and other AccuMark applications to open marker data in Classic Marking.

This transition to Easy Marking ensures compatibility with ongoing Microsoft Operating System updated including Windows 11. Also, this change allows increased graphic stability and support for newer graphics drivers and interface.

Since the introduction of Easy Marking, development and enhancements to marking have only been done for this interface. All the latest features and improvements have only been included in Easy Marking, including support for images and Sending markers to nest in the cloud.

4. V16.1 LECTRA DIGITAL PLATFORM INTEGRATIONS

4.1 Link to Lectra Digital Platform

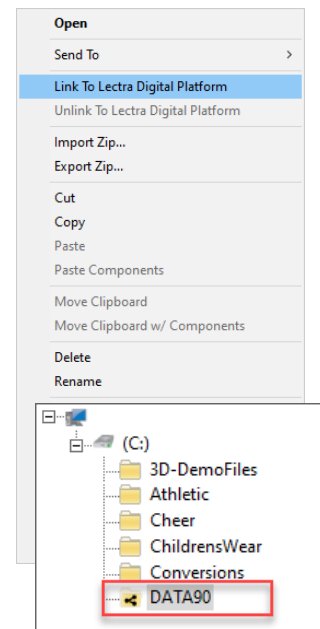
For customers connected to Lectra 4.0 solutions such as Kubix Link or Fashion/Furniture On Demand, AccuMark models are available for direct use within the Lectra Digital Platform. This integration provides accurate pattern files from AccuMark Explorer.

4.1.1 Linking a Storage Area

A storage area must first be linked to the Lectra Digital Platform for models to upload and sync. There is no limit on the number of storage areas that can be linked.

To Link a Storage Area:

1. Select the storage area(s) to link from AccuMark Explorer. The storage area can be a local, network, SQL, or SQL subfolder. Note the option to link is only available with the following requirements:
 - a. User Licensing is the license method
 - b. User/company account is associated with either Kubix Link or Fashion/Furniture On Demand
2. With the storage area(s) selected, right-click and choose the option Link to Lectra Digital Platform.
3. Once linked, the storage area will display a share symbol, and as you save models, the files will be uploaded and synchronized with the latest updates in the Lectra Digital Platform.



Note that linking a storage area only establishes a connection. A model save or storage area sync is required to upload model(s) to the Lectra Digital Platform.

4.1.2 Unlinking a Storage Area

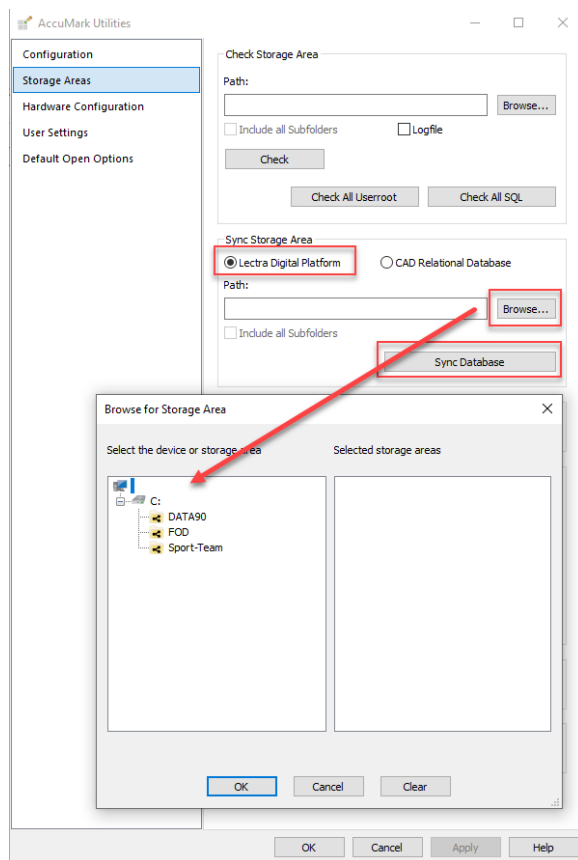
To stop data synchronization to the Lectra Digital Platform, users can right-click on any linked storage area and select Unlink to Lectra Digital Platform. This action will remove the share symbol from the storage area folder and delete all models shared in the Lectra Digital Platform. Use this feature with caution as it will impact the Lectra 4.0 solutions referencing these pattern files.

4.1.3 Sync Storage Area

When initially configuring AccuMark data to Kubix Link, it is possible to upload all models within a storage area. The sync provides a background utility to automate the upload process for multiple models. Note depending on the storage area size, this can take some time to complete. At any point, you can reference the Activity Log located in the View tab of AccuMark Explorer to review the upload status.

To Sync Storage Area(s) to the Lectra Digital Platform:

1. Open AccuMark Explorer, and from the File menu, select Options.
2. Within the AccuMark Utilities dialog, select the Storage Areas tab and locate the Sync Storage Area section.
3. Select Lectra Digital Platform and click Browse. Choose all storage areas to sync. Note that only linked storage areas will be available to sync.
4. When all storage area(s) are selected, click Sync Database.



4.1.4 Best Practices

Actions taken within the AccuMark environment can impact AccuMark data stored within the Lectra Digital platform.

Deleting Linked Models/Storage Areas

If you delete a model in AccuMark from a linked storage area, then the model will be deleted from the Lectra Digital Platform. If you delete a linked storage area in AccuMark Explorer, all models uploaded to the Lectra Digital Platform will be deleted.

Renaming Linked Models/Storage Areas

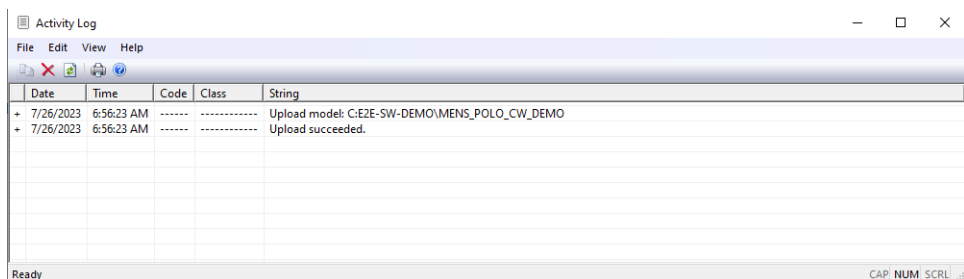
If you rename a model in AccuMark from a linked storage area, then the model will be updated in the Lectra Digital Platform. If you rename a linked storage area in AccuMark Explorer, the path for all models uploaded to the Lectra Digital Platform will be updated.

Missing Components

To ensure data accuracy for the Lectra 4.0 production solutions, if AccuMark models are missing components such as pieces or matching rules, those models will not be uploaded and synced to the Lectra Digital Platform. Review the model upload status at any time within the AccuMark Activity Log.

Activity Log

Located in the View tab of AccuMark Explorer, the Activity Log will list the status of models shared with the Lectra Digital Platform.



Date	Time	Code	Class	String
+ 7/26/2023	6:56:23 AM	-----	-----	Upload model: C:\E2E-SW-DEMO\MENS_POLO_CW_DEMO
+ 7/26/2023	6:56:23 AM	-----	-----	Upload succeeded.

4.2 New Kubix Link Integration – AccuMark Insight

Kubix Link, our fashion PLM, enables product-centric organizations to work from one official data source, which is always updated and easily accessible to every fashion industry stakeholder in their supply chain.

AccuMark Insight is a Kubix Link extension that lets you view real-time information from AccuMark pattern files and its latest updates.

AccuMark Insight allows you to view pattern sizes and pieces easily without access to AccuMark. Accelerate product development by easily sharing information with your subcontractors and team.

In addition, you can update patterns quickly by opening patterns from Kubix Link directly in Pattern Design or downloading then in native .zip file format for subcontractors. Track the progress of your models and save time in the development phases.

How It Works

1. Link the necessary AccuMark storage areas where the shared model data resides and save models or sync the storage area(s).
2. In Kubix Link, create a pattern section within an article and link your AccuMark model file and its measure chart.
3. Pattern data is automatically updated: pattern, size line, and measure chart information is displayed.
4. Access models any time from Kubix Link when AccuMark is installed on your computer.

ID1005 - TOP
j.gutierrez, 17 de jul. de 2023

KUBIX LINK

Model: C:DATA90\id1005 - top.mdl Variant: ID1005 - TOP Model Comment: Variant Analytical Code:

Variant Comment: Mail dropped: Var dropped: Open Download Pcs qty:

Articles

Article	Piece	Image	Min Size	Max Size	Qty Simple	DblQtyH	DblQtyV	Fabr Tp	Comment	Analytic Code	Shrink X	Shrink Y	Fabr Cat
ID1005 - BA...	ID1005 - BACK		XS	XL	1	0	0	S	1 SELF	BACK	1,00	1,00	
ID1005 - FR...	ID1005 - FRONT		XS	XL	1	0	0	S	1 SELF	FRONT	1,00	1,00	

Gradation

Size	Base
XS	<input type="checkbox"/>
S	<input type="checkbox"/>
M	<input checked="" type="checkbox"/>
L	<input type="checkbox"/>
XL	<input type="checkbox"/>

Measurement Charts

Ord	POM	Ref	Comment	XS	S	M	L	XL
0	Chest			191,52	220,22	250,95	283,72	318,52
1	Waist			611,89	662,18	712,22	762,25	812,29
2	Hip			690,88	741,68	792,48	843,28	893,83

4.3 Furniture and Fashion On Demand Integration Improvements

Furniture and Fashion On Demand by Lectra connects and automates on-demand production – from order reception to cut pieces. It's a turnkey solution comprising Lectra's Digital Cutting Platform.

In the Fall AccuMark release, there are integration improvements to expand on data interoperability. These updates include:

- **Direct data access to the Lectra Digital Platform**

Users can remain in AccuMark and upload models to the Lectra Digital Platform without leaving AccuMark Explorer. No longer are separate conversions required! For more information on connecting to the Lectra Digital Platform, review section 4.1 of this guide.

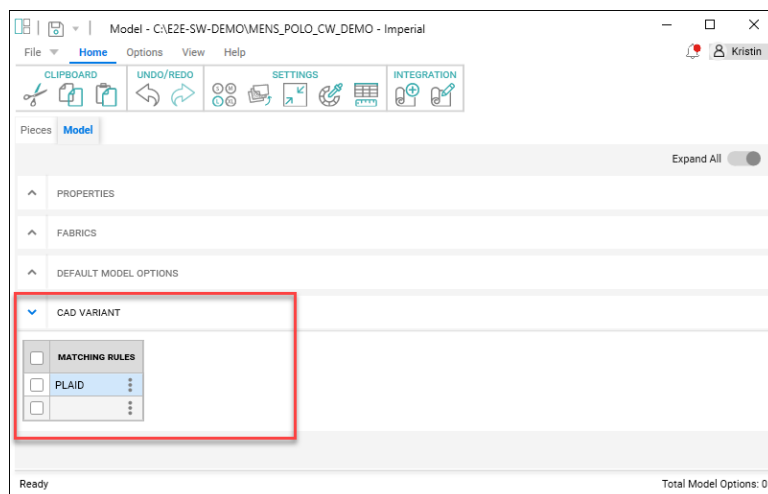
- **Support for customized product with material matching**

AccuMark customized models with model options are now converted automatically to an MDL variant with supporting motif points and matching links.

4.3.1 Model CAD Variant – Matching Rules

There is a new entry in the AccuMark model editor to link matching rules when applicable.* When a model contains matching points, the corresponding matching rule can be linked within the model tab. This link ensures that the model + matching rules are uploaded and converted together for accurate usage in the Furniture and Fashion On Demand platform. Note all components, including pieces and matching rules, must exist in the linked storage area for the model to upload to the Lectra Digital Platform.

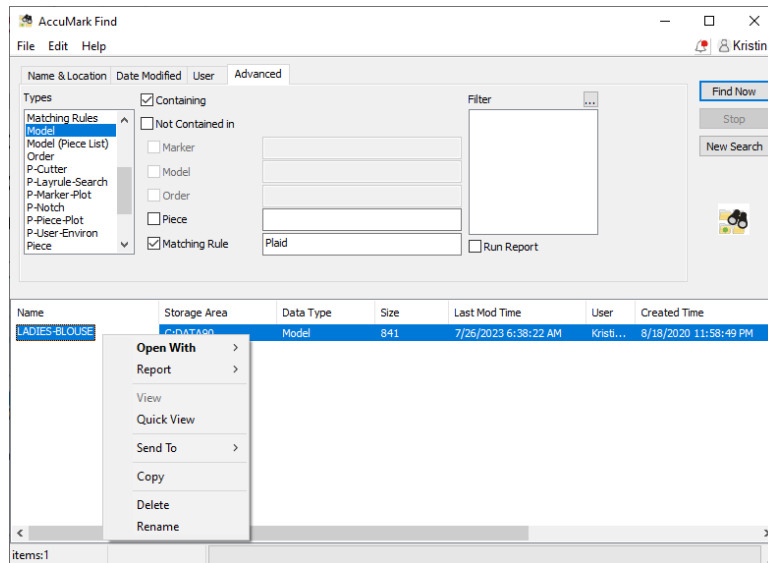
If a matching rule is updated, all the models linked with the matching rule will resync to the Lectra Digital Platform to ensure the utilization of the latest matching information.



*In order to view the new CAD Variant section in the model, the user must have a user license account associated with Furniture or Fashion On Demand.

4.3.2 Utilizing Find

AccuMark Find helps manage models where matching rules are linked. A new option added in the Advanced tab allows users to find models that contain a specified matching rule. Users can right-click on the search results to manage as needed.

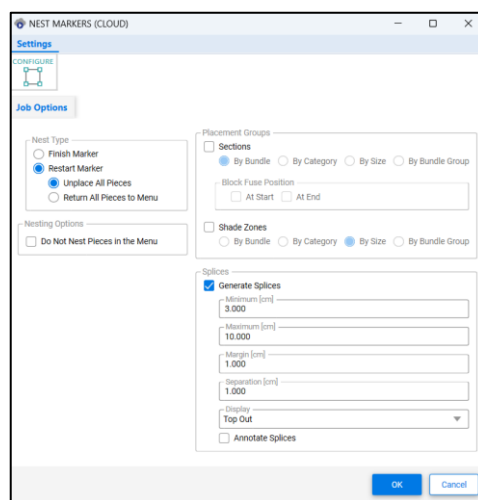


4.4 Cloud Nesting Improvements

Additional functionality has been added to the optional cloud nesting offerings – Flex or Quick. For more information on how to add this capability to your AccuMark software, please contact your sales representative.

4.4.1 Do Not Nest Pieces in the Menu

Sending AccuMark marker data directly to Flex or Quick Nest now has the ability to send only the pieces in the marker work area, ignoring the pieces within the piece icon menu. The selection “Do not nest pieces in the Menu” becomes active with Restart/Unplace All Pieces. This checkbox allows sending markers to nest when more pieces were ordered than need to be placed in the completed nest.



4.4.2 Generate Splices

When submitting jobs to nest, new settings in the dialog have been added to allow Splices to be automatically created, using the defined Minimum/Maximum and Margin amounts. The splices will be added to the marker as the nested marker is saved back into the AccuMark Storage Area.

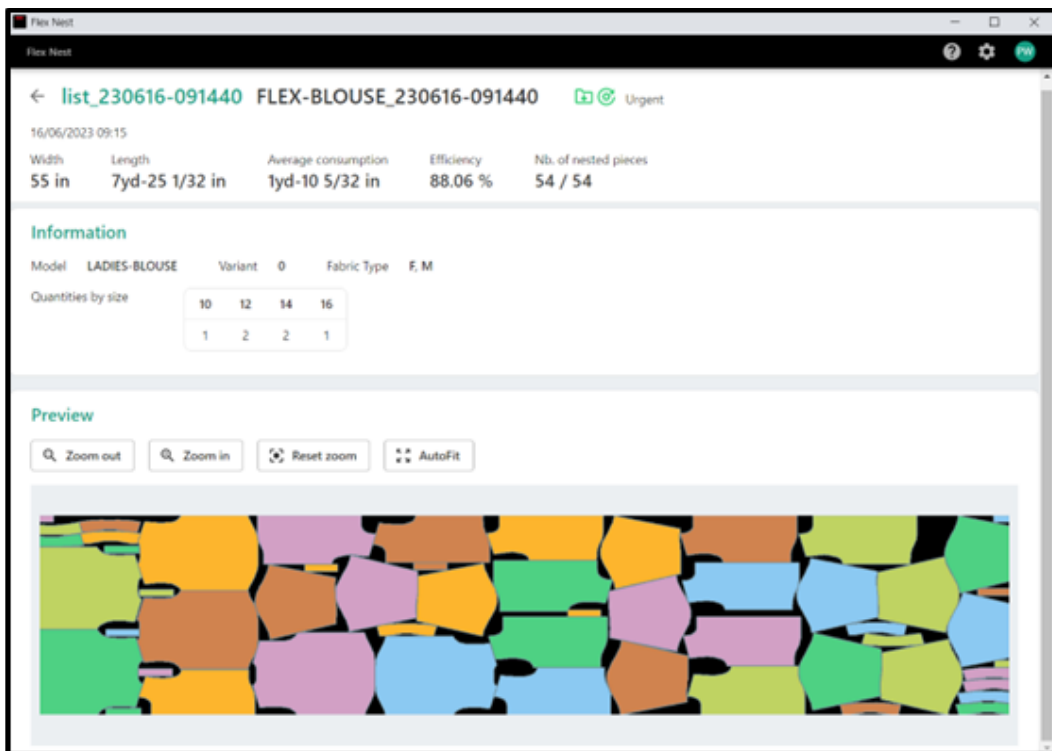
The values display in the currently select Notation: cm for Metric, or in for Imperial. The unit setting field is found in the Configure Menu of the dialog. Select the Generate Splices checkbox to enable the fields for editing.

- Minimum – This setting determines the shortest length of a splice mark allowed
- Maximum – Entering this setting determines the longest length of a splice mark allowed
- Margin – Controls how much will be added to either side of a splice mark to ensure all pieces are cut
- Separation – Distance from the marker border to splice
- Display – Determines where the visual representation of the splices will appear, top, bottom, inside, outside of the marker

4.4.3 View Details in the Cloud

Detailed information for nested markers now displays in the cloud for the Flex or Quick view.

Select the icon to view information including the AccuMark Model Name, Model Options, Fabric Types available for the Model, and quantities ordered for the marker.



5. V16.0 GENERAL IMPROVEMENTS

5.1 Alterations with Multi-Dimensional Grading

Increase customer size offerings by combining the functionality of alterations with multi-dimensional grade. Combining the rule-based movements with the grading approach simplifies complex adjustments to generate an accurate product fit.

Alterations and multi-dimensional grading are features in AccuMark that allow for fit customization. Alterations utilize point ids and rules to define a custom movement. Multi-dimensional grade assigns multiple size lines (rule tables) to a piece allowing movement by grade rules in each dimension. Before this release, only one customization method was allowed. If multi-dimensional graded was stored in a piece, all alteration functionality would automatically be blocked.

This is a fully integrated solution throughout the Gerber AccuMark software suite. General Guidelines include:

- You can't use a size separator character in any dimension of the piece size name.
- For selection, always reference D1.

NOTE: For more information on multi-dimensional grade, refer to the v12 What's New documentation in C:\ProgramData\Gerber Technology\Training Docs\AccuMark Documentation\What's New Previous

5.1.1 Size Code and Multidimensional Grade

There is no change to the size code editor to support the grading enhancement allowing an easy transition for continued use of existing editors. Note that all ordered sizes continue to list only Dimension 1 (D1) size names. In the Order Editor and Pattern Design size selection fields, all multidimensional sizes will be available for the defined actual sizes.

Examples of Order Size Names

Order Number	Customer Name	Size Name
12323	ROB SMITH	18HNECK

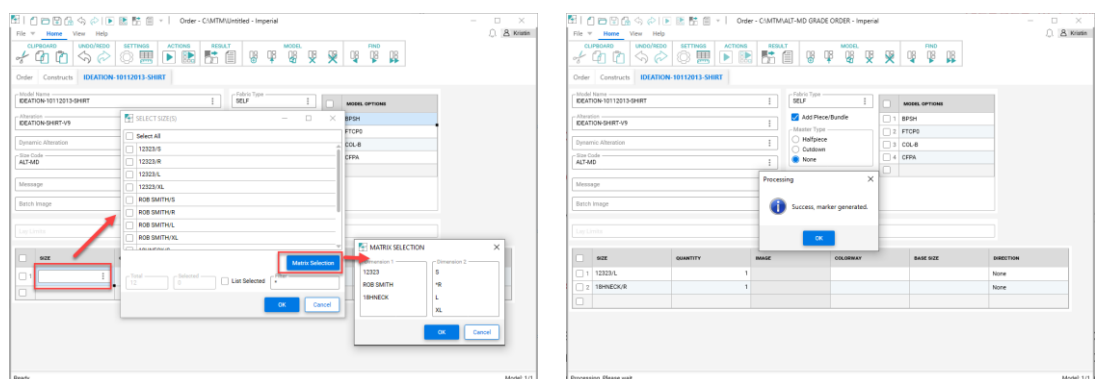
The image shows three screenshots of the SizeCode editor interface. Each screenshot displays a table with columns for Rule, Amount, and Rule. The first screenshot shows 'Ordered Size' as 12323 and 'Actual Size' as 16NECK, 17NECK, 18HNECK. The second screenshot shows 'Ordered Size' as ROB SMITH and 'Actual Size' as 16NECK, 17NECK, 18HNECK. The third screenshot shows 'Ordered Size' as 18HNECK and 'Actual Size' as 16NECK, 17NECK, 18HNECK.

5.1.2 Orders with Alterations and Multidimensional Grade

The basic ordering process remains unchanged. However, select a model with multidimensional grade, and the alteration and size code fields remain active. The previous behavior blocked these selections.

To order a marker with Alterations and Multidimensional Grade:

1. From AccuMark Explorer, go to File→New→Order.
2. Enter all the required parameters in the Order tab, such as the Lay Limit, Annotation, and Fabric Width.
3. In the Model tab, select a model with multidimensional grade.
4. Next, select the alteration and size code editors.
5. For the size selection, use the lookup to select sizes. The ordered size names defined in the size code display with all available dimensions. Use the matrix selection to refine the selection.
6. Enter all remaining quantities, fabrics, and optional items like model options.
7. From the toolbar, Process the order.

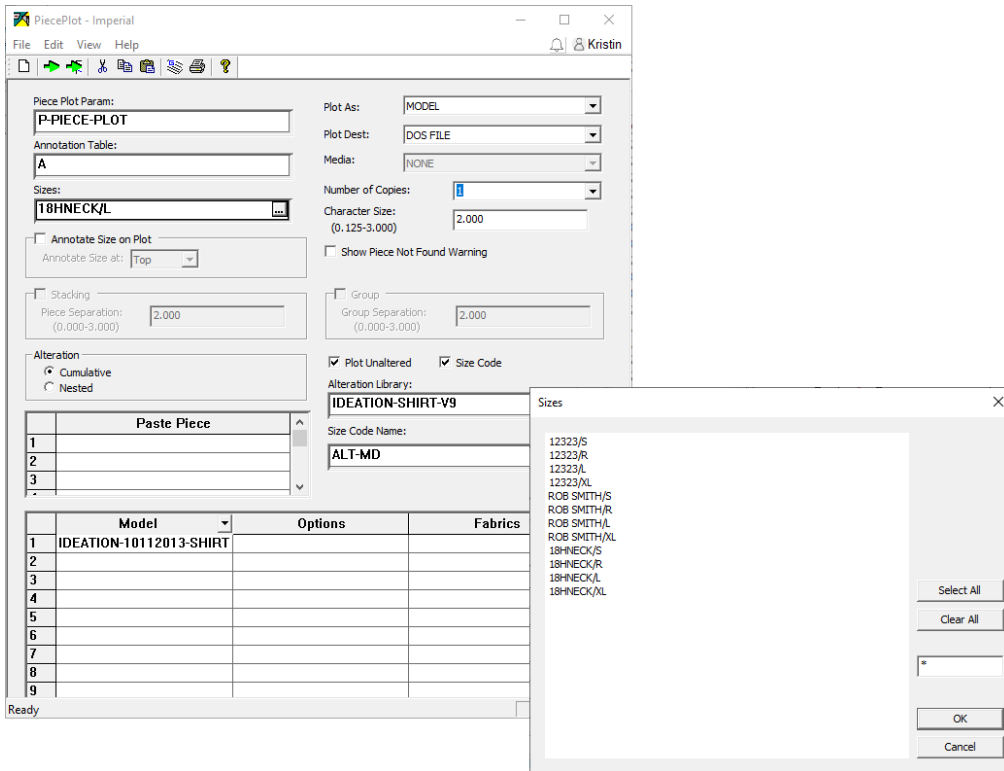


Ordered Size Names are available with Multiple Dimensions

Orders processed successfully with Alterations and Multidimensional Grade

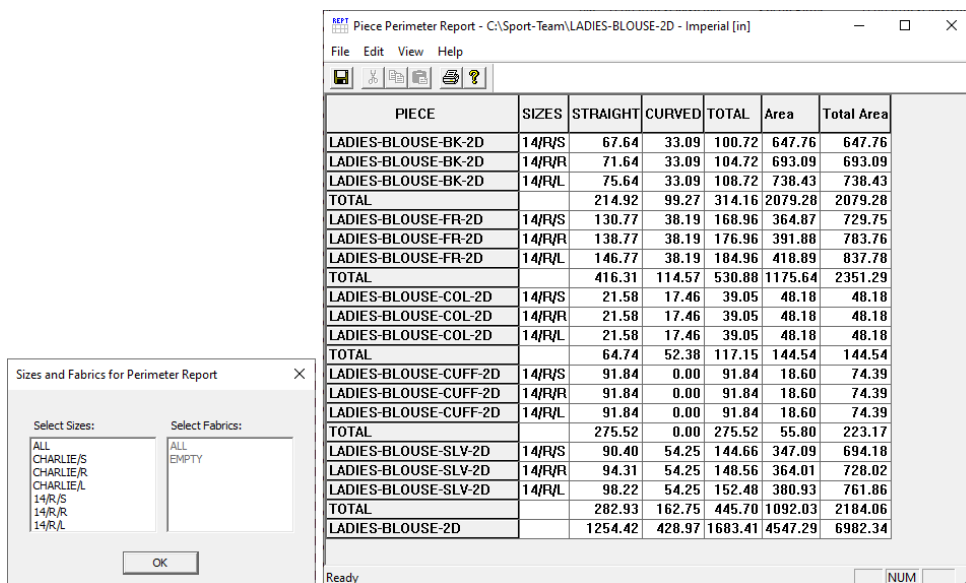
5.1.3 Plotting Alterations and Multidimensional Grade

Plotting pieces or models in AccuMark Explorer adds the option to plot Alterations with Multidimensional Grade. This functionality allows you to plot a sample and validate the fit. Once the alteration and size code are defined, the size selection will update with the multidimensional size name.



5.1.4 Reports with Alterations and Multidimensional Grade

Reporting options such as Alter Piece Perimeter now allow models with multidimensional grade to be selected and reviewed with an alteration library and size code. This helps to understand the altered piece area for costing calculations.



5.2 User Interface Updates

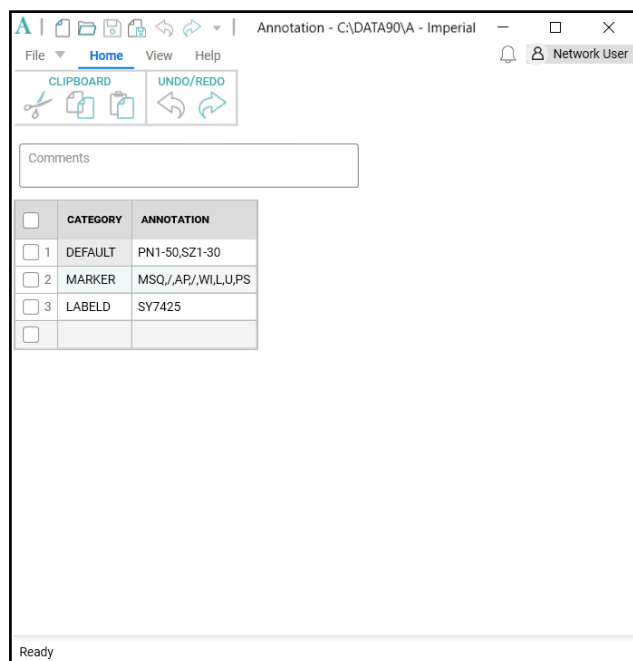
With the release of the April 2023 AccuMark, users will find even more improvements for editors used for the most common workflows. The new look of these forms is part of an ongoing project to refresh the look of the software, while improving user productivity. Additions of a ribbon menu, common functionality and simplified colors make navigation easy.

The ribbon menu allows users to rapidly perform common data management tasks including opening new forms, making edits to the form, locating and navigating to an item or accessing the online help resources. Users can also take advantage of the common features in newly redesigned forms including creating a custom Quick Access Toolbar for even more flexibility.

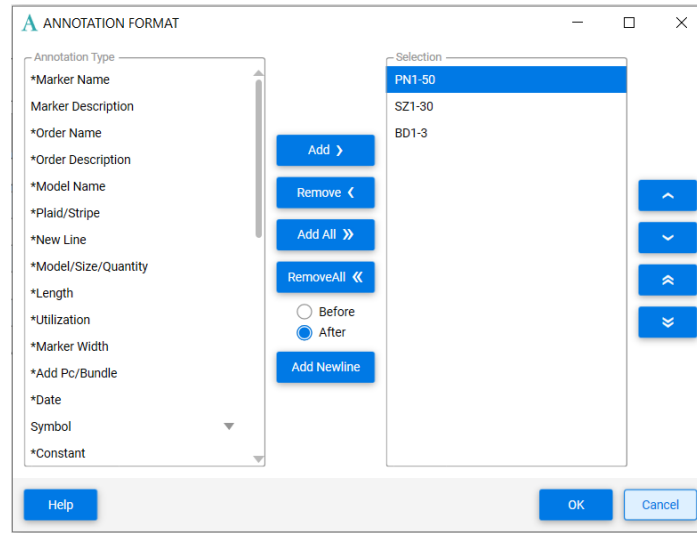
5.2.1 Updated Annotation Editor

The updated AccuMark Annotation Editor now displays the category and annotation in an updated format, and the look up provides access to an interactive grid that allows selections to be made and added to define the annotation that will plot on pieces and/or markers. The new ribbon groups functionality into a File menu as well as Home, View and Help tabs.

Users may still type directly in the category and annotation fields on the main page. New lines are automatically added to the grid as more entries are made.



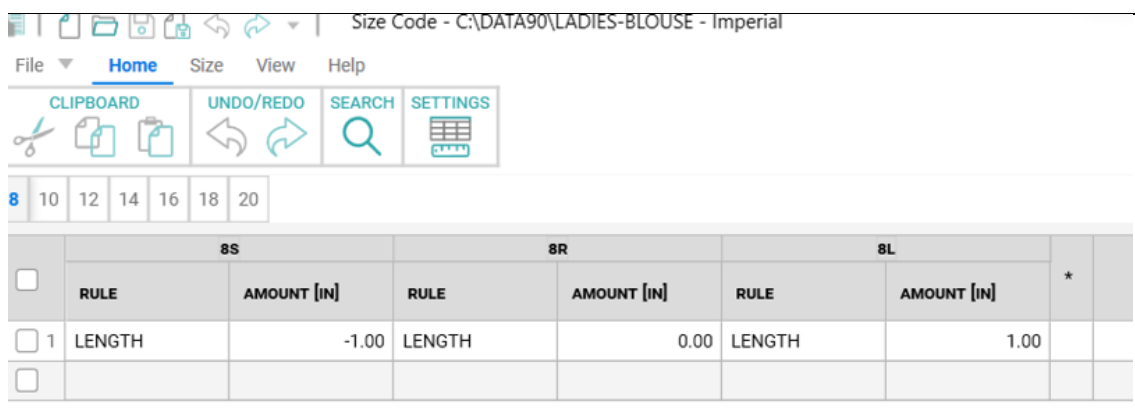
A dialog box for Annotation Format opens when the lookup control is selected in within an Annotation Cell. Annotation Type can be selected from the left list box, then added to the Selection group on the right. Controls in the center of the dialog box allows choices to be moved from one list box to the other. Control and Shift keys can be used to select multiple items to move.



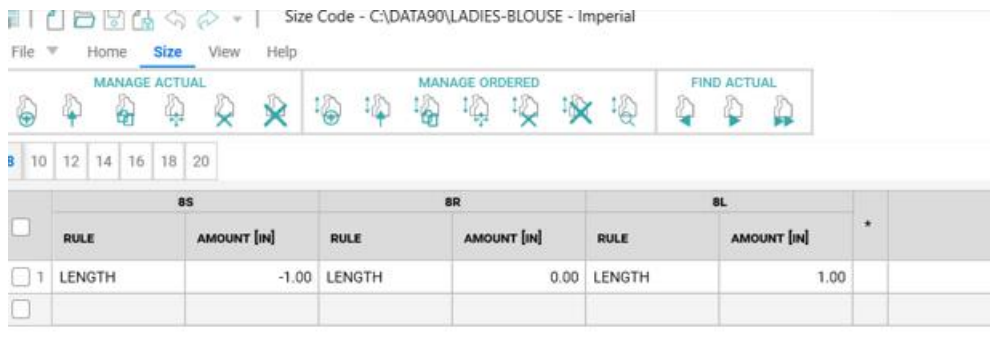
1.1.1 Updated Size Code Editor

The new look for the Size Code includes a File Menu, as well as Home, Size, View and Help tabs. Alteration Rule names and the alteration amounts display in a grid with headers displaying the Ordered Size. Tabs above the grid list each actual size. The active actual size being edited is highlighted in blue.

Simplified icons will add, copy, delete and arrange the actual or ordered sizes in the display. Use the Home Tab tools to perform Windows clipboard features such as cut/copy/paste as well as to undo or redo actions while editing. The Search icon will perform a general windows search of the data in the grid while the Settings allow you to open the User Environment Parameter table for edit.



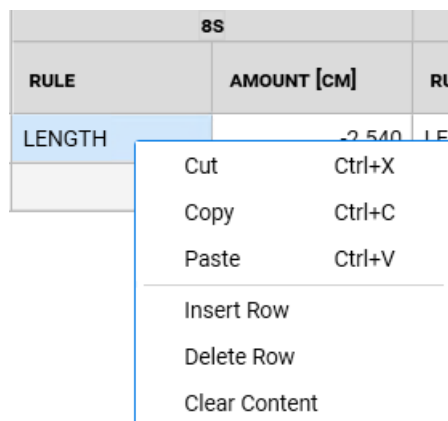
Use the Size Tab to add, delete and rearrange the Actual Ordered Sizes. Powerful Find tools allow search criteria to be defined to locate sizes with specific alteration names and / or alteration amounts.



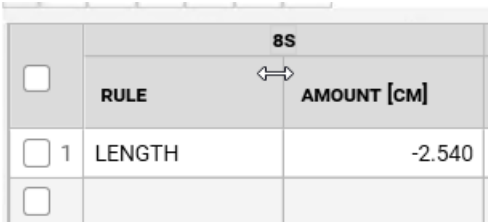
The view tab allows the status bar to be shown/hidden, which will display the total number of actual sizes in the open Size Code table. To use a dark theme, choose “Monarch Dark” from the View tab.

The Help tab provides access to useful reference material including the Help File, current version documents for What’s New and Release Notes.

Use Context menus, accessed by a right mouse click, within the cells of the grid to perform common editing tasks such as Cut, Copy, Paste as well as to delete or insert rows.



The width of the columns can be adjusted by simply dragging the divider. A right mouse click will offer the option to Reset the column width to the original default. The Alteration rule amount column indicates if the units of measure for the alteration is set for inches, centimeters or millimeters which is determined by the User Environment Parameter Table.

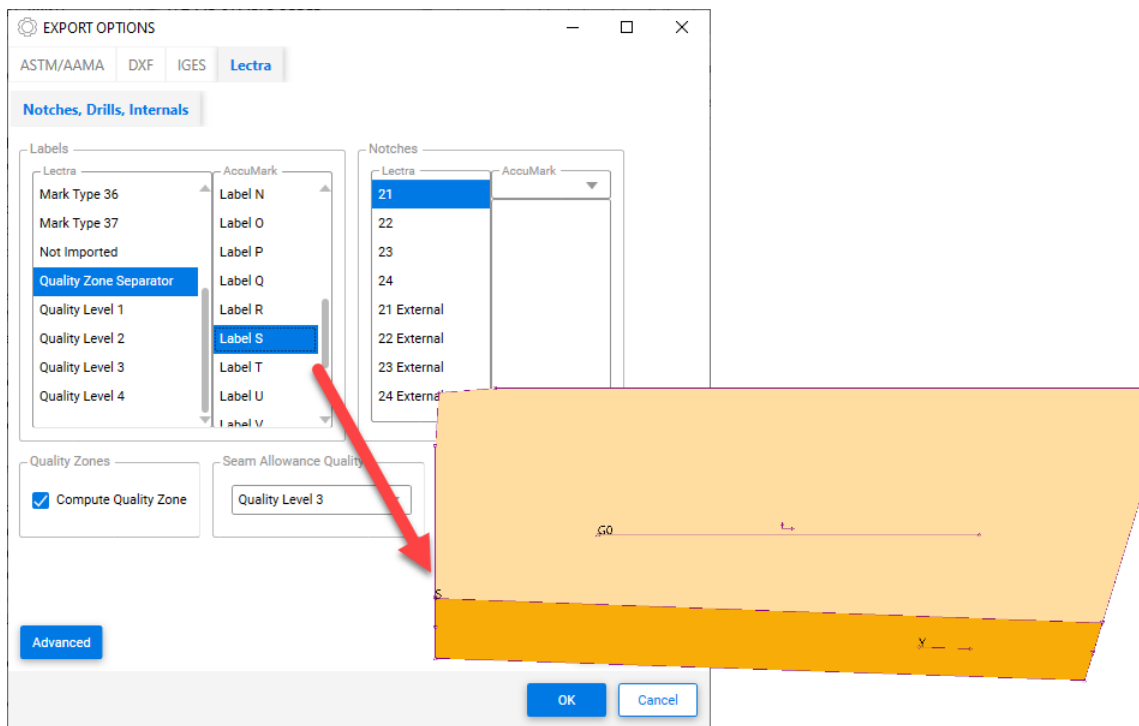


	8S	
<input type="checkbox"/>	RULE	AMOUNT [CM]
<input type="checkbox"/> 1	LENGTH	-2.540
<input type="checkbox"/>		

In addition to the updated look for the Annotation and Size Code Editors, performance improvements have been made for AccuMark MTM. Review the MTM What's New document for details on the changes changes made to improve speed and responsiveness.

5.3 Conversions

An expanded selection of AccuMark labels, including label S, is added to convert Quality Zone Separators when exporting to Modaris format. This offers support for producing products often cut on leather where quality or shade zones indicate optimal placement for cutting. By adding additional labels, AccuMark users can quickly convert files to integrate with Lectra cutters and 4.0 solutions without altering existing data.

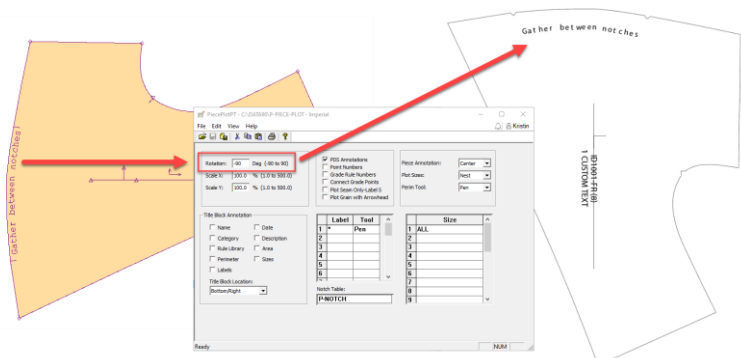


5.4 Plotting Improvements for Annotation On Line

Annotation on Line was introduced in AccuMark 15.1, where text follows the path an internal or perimeter line to indicate production information in specific locations. The feature is updated in 16.0 to support additional plot options for both piece and marker plotting. The list below highlights the supported plot scenarios.

Piece Plot

- Scale
- Rotate
- Mirrored
- Save as image
- Plot altered



Marker Plot

- Marker scale
- Folded pieces
- Mirrored pieces
- Flip pieces
- Annotation on seam

Conversion

- Standard DXF

NOTE: For more information on annotation on line, refer to the v15 What's New documentation in C:\ProgramData\Gerber Technology\Training Docs\AccuMark Documentation\What's New Previous

5.5 Updates to PERU

Known issues and know requests submitted through the Gerber Problem and Enhancement Report Utility now notify Lectra Customer Success to open a support ticket.

5.6 Gerber AccuMark Localization

We are excited to announce our updated translation process for the AccuMark software suite. Our goal is to obtain consistency for the lexicon for the entire portfolio at Lectra and maintain a high level of translation quality to meet our premium positioning with dedicated terms of our 3 market strategic sectors: fashion, furniture, and automotive.

Starting from v16.0, each release of the AccuMark software suite with its translations will be available at the same time as the English version.

5.6.1 Supported Languages

The Gerber AccuMark Suite officially translates into ten languages.

- French
- Italian
- Spanish
- German
- Portuguese
- Simplified Chinese
- Traditional Chinese
- Turkish
- Polish
- Japanese

In addition to the above ten languages, we also provide a Hong Kong Language Pack with Traditional Chinese content.

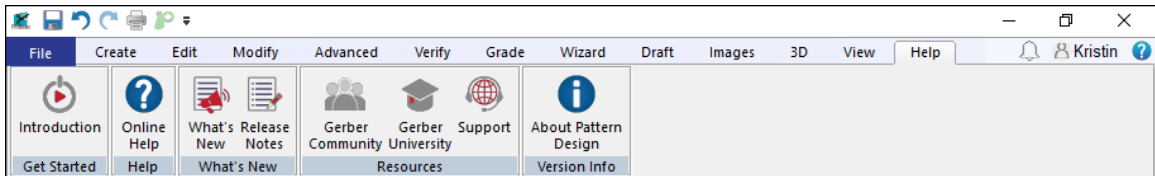
5.6.2 Documentation

What's New documentation will translate in the above languages following the same methodology as the software. New for v16.0, the translated documentation will be embedded into the language pack. From the Help Tab of the software program (example: AccuMark Explorer > Help Tab > What's New Icon) the translated documentation is available for the language pack installed. We are providing you translated contents in real time with the new Features.

If a translation is not provided for a What's New, the content remains in English. Images inside the What's New documentation remains in English. The Release Note documentation remains in English.

5.7 Help/Documentation

The Help tab icons now match to the help icons displayed in the Introductory Help to easily identify the support functionality in all AccuMark applications.



Microsoft has ended support for the XPS file format and retired the XPS Viewer program. As Microsoft no longer issues security updates for this viewer application, the AccuMark documentation is no longer installed in this format. Documents detailing the new features and system requirements will be provided as PDF files.

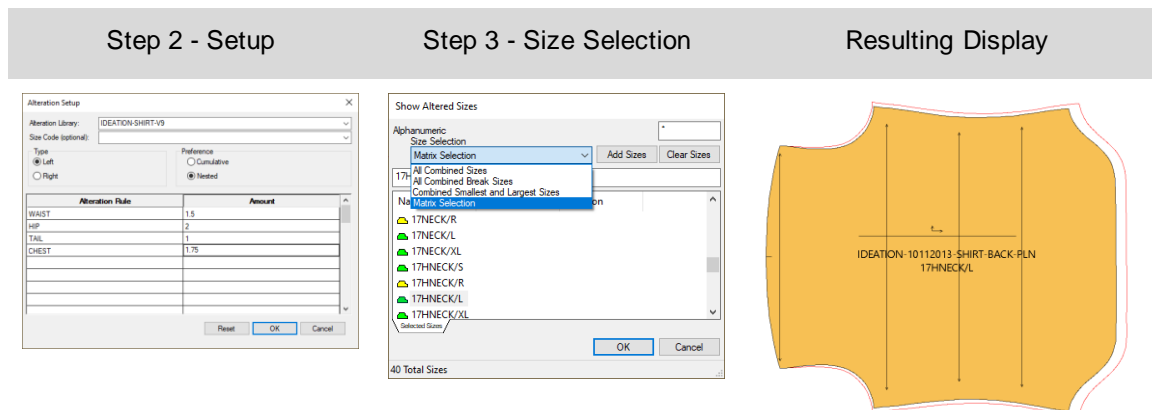
6. V16.0 PATTERN DESIGN IMPROVEMENTS

6.1 View Alterations with Multidimensional Grade

All functionality with alterations supports models/pieces utilizing multidimensional grade. Use the feature View Alterations to visualize the piece geometry for custom-fit patterns.

To View Alterations with Multidimensional Graded Pieces:

1. Open the model in Pattern Design, place desired piece(s) in the work area, and go to Grade → Altered Sizes. Select piece(s) to view and ensure D1 is the active dimension.
2. Select the alteration library and alteration rules to display. The size code option is available if the rules and values are predefined. Press OK to continue.
3. The following Show Altered Sizes dialog provides the size(s) to view. By default, all multidimensional size combinations display. To manage large-size sets, use the Matrix Selection option with the ctrl or shift key for multi-selection. When finished, select OK.
4. The altered piece will display in the work area as cumulative or nested lines showing the altered movement based on the geometry of the selected multidimensional graded size.



6.2 Create Altered Size with Multidimensional Grade

All functionality with alterations supports models/pieces utilizing multidimensional grade. Use the feature Create Altered Size to verify the piece measurements for custom-fit patterns or generate a new pattern piece. The same selection process applies to all alterations features in Pattern Design.

To Create Altered Sizes with Multidimensional Graded Pieces:

1. Place piece(s) in Pattern Design work area and go to Create → Altered Sizes. Select piece(s) to create and ensure D1 is the active dimension.
2. Select the alteration library and alteration rules to generate. The size code option is available if the rules and values are predefined. Press OK to continue.
3. The following Show Altered Sizes dialog provides the size(s) to create. By default, all multidimensional size combinations display. To manage large-size sets, use the Matrix Selection option with the ctrl or shift key for multi-selection. When finished, select OK.

- The altered piece will generate as a separate piece(s) with the altered movement based on the geometry of the selected multidimensional graded size.

Step 2 - Setup	Step 3 - Size Selection	Resulting Display								
<thead> <tr> <th>Alteration Rule</th> <th>Amount</th> </tr> </thead> <tbody> <tr> <td>WAST</td> <td>1.50</td> </tr> <tr> <td>uP</td> <td>2</td> </tr> <tr> <td>TAIL</td> <td>1</td> </tr> <tr> <td>CHEST</td> <td>1.75</td> </tr> </tbody>	Alteration Rule	Amount	WAST	1.50	uP	2	TAIL	1	CHEST	1.75
Alteration Rule	Amount									
WAST	1.50									
uP	2									
TAIL	1									
CHEST	1.75									

 | || **NOTE:** The new altered piece does not contain the graded nest. Use the option New Piece Name to avoid overwriting the original pattern. | | |

6.3 Plot Altered Size with Multidimensional Grade

All functionality with alterations supports models/pieces utilizing multidimensional grade. Use the feature Plot Altered to verify the piece measurements for custom-fit patterns or for sample production. The same selection process applies to all alterations features in Pattern Design.

To Plot Altered Sizes with Multidimensional Graded Pieces:

- Place piece(s) in Pattern Design work area and go to File → Plot Altered. Select piece(s) to plot and ensure D1 is the active dimension.
- Select the alteration library and alteration rules to plot. The size code option is available if the rules and values are predefined. Press OK to continue.
- The following Show Altered Sizes dialog provides the size(s) to plot. By default, all multidimensional size combinations display. To manage large-size sets, use the Matrix Selection option with the ctrl or shift key for multi-selection. When finished, select OK.
- The altered piece will plot to the destination defined in the Preferences with the altered movement based on the geometry of the selected multidimensional graded size.

Step 2 - Setup	Step 3 - Size Selection	Resulting Display								
<thead> <tr> <th>Alteration Rule</th> <th>Amount</th> </tr> </thead> <tbody> <tr> <td>WAST</td> <td>1.5</td> </tr> <tr> <td>uP</td> <td>2</td> </tr> <tr> <td>TAIL</td> <td>1</td> </tr> <tr> <td>CHEST</td> <td>1.75</td> </tr> </tbody>	Alteration Rule	Amount	WAST	1.5	uP	2	TAIL	1	CHEST	1.75
Alteration Rule	Amount									
WAST	1.5									
uP	2									
TAIL	1									
CHEST	1.75									

 | |

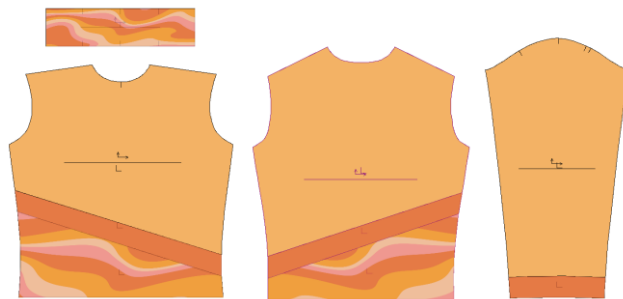
6.4 New Function to Clip Image

Clip image easily maintains complex graphic placement for all sizes by utilizing the powerful grade features for internal lines. No longer spend hours in graphic programs to align images for individual sizes. Instead, only simple blocks are needed, and the image will clip to the selected graded internals.

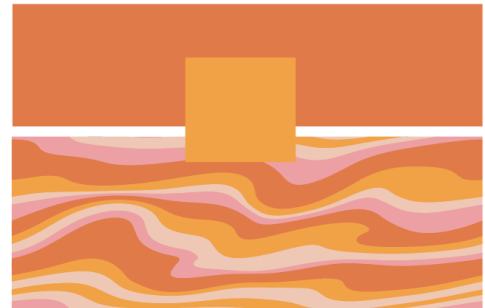
To Clip Images:

1. Add internal design lines to the piece using any create line function. Select Add Grade Rules on Intersection option to add grade to the internal line.
2. Place trim image(s) on a piece.
3. From the Images tab, select Clip in the Modify panel.
4. Select the image to clip.
5. Then use the Ctrl key in Click n Go mode to select all internal lines to clip the image.
6. Select the image on the side/region to keep.
7. Repeat as needed.

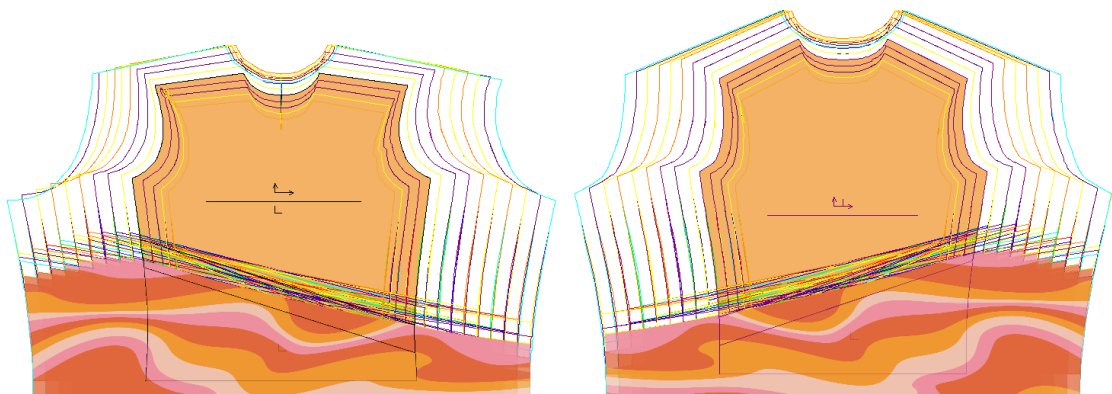
Clip Image to Internal Lines



Simple Artwork Preparation



Automatically Clips to Graded Internal Lines

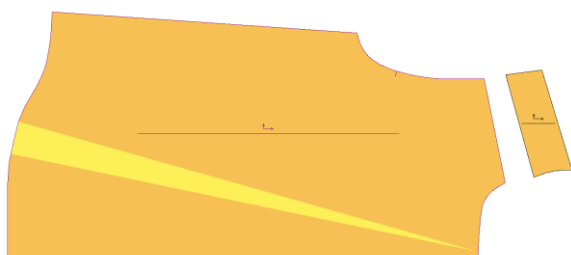


Use the same Clip function to unclip an image. To Unclip Images:

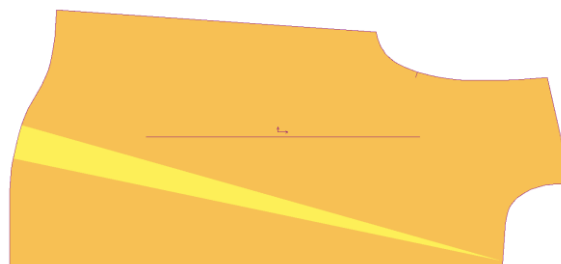
1. From the Images tab, select Clip in the Modify panel.
2. Select the image to unclip.
3. Then use the Ctrl key in Click n Go mode to select all internal lines to unclip.
4. Repeat as needed.

6.5 Maintain Fullness Objects When Modifying

Fullness now supports maintaining the object when performing Modify functions such as Combine Piece. This expanded feature support is helpful to edit, close, or delete the fullness as modifications occur.



Before Combine Piece

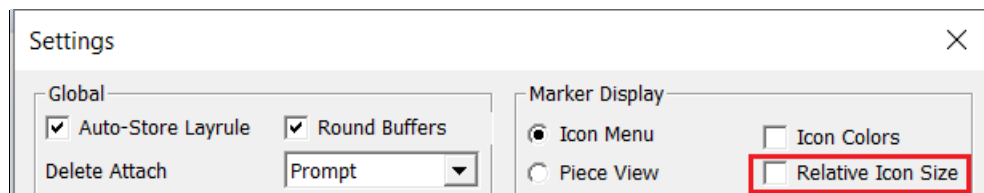


After Combine Piece→Fullness Object Maintained

7. V16.0 EASY MARKING IMPROVEMENTS

7.1 Relative Icon Size Preference

Manual marker makers can now view the relative size of pieces in relation to each other before dragging them into the marking area. The Settings Dialog box now includes a checkbox for “Relative Icon Size” which will apply to the icon menu and piece view displays. The default setting for this new option is Off.



In the image below, the Relative Icon Size is off. Piece icon sizes display in the same scale no matter what the size of the actual piece geometry. For example, the back pieces appear as large as the collars and cuffs.

1/1		LADIES-BLOUSE X									
1- 10	A	1	--	1	1	1	1	1	1	1	1
1- 12	B	2	--	2	2	2	2	2	2	2	2
1- 14	D	2	--	2	2	2	2	2	2	2	2
1- 16	F	1	--	1	1	1	1	1	1	1	1

When the setting is checked, the piece images in the menu are scaled to display relative size. The collars and cuffs are shown smaller than the back, fronts, and sleeves.

1/1		LADIES-BLOUSE X									
1- 10	A	1	--	1	1	1	1	1	1	1	1
1- 12	B	2	--	2	2	2	2	2	2	2	2
1- 14	D	2	--	2	2	2	2	2	2	2	2
1- 16	F	1	--	1	1	1	1	1	1	1	1

7.2 PDF Supports Internal Line Label H for Digital Print Files

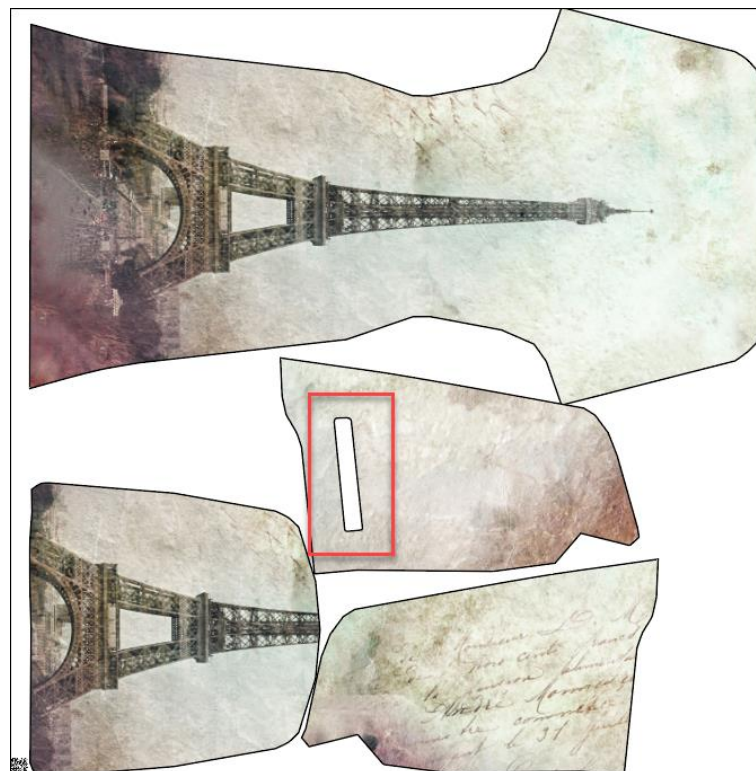
New support for internal cut lines with digital print files reduces ink consumption by only printing desired areas.

To utilize this improvement, you can add a closed internal H line label to the piece(s) in Pattern Design. Once the production marker is ordered and processed, the internal cutout will accurately display in Easy Marking. Use the feature Save as 1:1 in Easy Marking to create the digital print file.

Internal H Closed Cutout



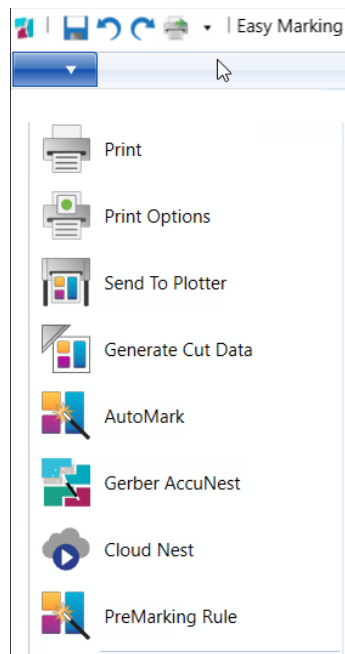
Cutout Supported in PDF Digital Print File



7.3 Additional Options for Quick and Flex Nesting for AccuMark markers

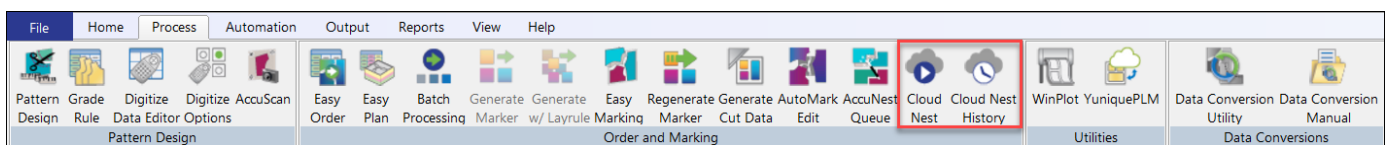
7.3.1 Send to Cloud Nesting from Easy Marking

Send markers now to Cloud Nesting directly from Easy Marking using a new selection to the File Menu. This new capability allows users to partially place markers to control placement of particular pieces, then finish the marker with the power of Cloud Nesting.



7.3.2 Sectional and Shade Zone Support

Continuing the work begun in AccuMark version 15.1.0, users can now define sections and shade zones for markers being sent for Cloud Nesting. These offers require a subscription for nesting, which can be purchased by contacting your sales representative.



Quick and Flex offer an automated cloud-based nesting capability for costing, procurement and production.

- Quick gives brands and retailers the ability to fast-track product development for new items with agility and ease.
- Flex is designed for manufacturers with a high volume of markers to provide a balance for different production cycles and ensures users can efficiently manage activity peaks.

Set the preferences for nesting for sections and shade zones in the dialog box that appears when sending markers to cloud nesting.

Placement Groups

Sections

By Bundle By Category By Size By Bundle Group

From AccuPlan

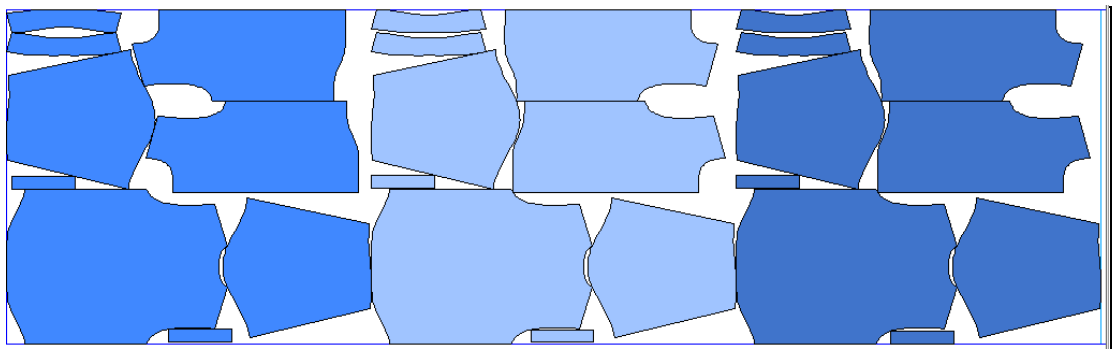
Block Fuse Position

At Start At End

Shade Zones

By Bundle By Category By Size By Bundle Group

Sections allow for pieces to be grouped together for cutting and picking purposes and are often used during step spreading.



Shade zone are horizontal zones intended to allow pieces to be grouped together for fabrics with shade variations, lighter or darker in certain places.

