



FOR IMMEDIATE RELEASE

Contact – Lectra Headquarters / Press Dept.: Nathalie Gerbal

E-mail: n.gerbal@lectra.com

Tel: +33 (0)1 53 64 42 37 – Fax: +33 (0)1 53 64 43 40

Lectra Launches Modaris® V6R1 and Optimizes Model and Collection Development

Paris, March 16, 2009 – Lectra, the world leader in integrated technology solutions dedicated to industries using soft materials—textiles, leather, industrial fabrics, and composite materials—launches the latest version of Modaris, its pattern-making solution for the apparel industry. Modaris has been the industry standard for more than 15 years and is used by the biggest names in fashion worldwide. Modaris V6R1 offers even greater productivity, quality, and innovation for apparel industry professionals.

Modaris V6R1: Dealing with accelerated collection renewal in stores

With this new version of its pattern-making solution, Lectra allows apparel professionals to fully optimize their product ranges and associated patterns. The solution supports brands, retailers, sub- and co-contractors, service bureaus, and fashion schools, alike in their quest to meet the most stringent quality standards for finished products. This tool responds to the industry's constant search for innovative technological solutions and, by facilitating the creation of different models more quickly, Lectra enables users to stay ahead of the competition and build customer loyalty.

Modaris V6R1's powerful construction tools allow apparel professionals to develop more patterns in less time. With this solution the number of physical prototypes necessary for the finalization and validation of models is reduced, and initial production runs can be made sooner and at reduced costs. Its high-performance capacities for all-size grading guarantee the quality and fit of garments and permit companies to optimize the development of new models and collections by drawing on existing elements. By making pattern information exchange simpler and clearer, Modaris V6R1 enables users to capitalize on resources and best practices in pattern-making and manage product development in a collaborative and international context.

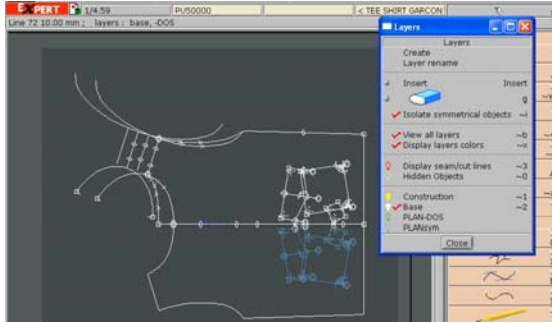
Modaris V6R1: Real benefits for pattern makers

Modaris V6R1 is more user-friendly and offers higher performance, along with increased accuracy and speed at every stage of the model development cycle, including the creation and finalization of patterns, industrialization, grading, verification, and pre-production. A new layer interface for pattern construction ensures better quality and accuracy and reduces both the risk of error and the number of checks necessary. With Modaris V6R1, apparel professionals are able to reduce the time needed for the creation, modification, grading, and verification of their model patterns by around 20%.

In addition, Modaris V6R1's tools for automated creation and adjustment of corners, hems, and even mitered corners contribute to producing garments with a better quality of finish. These features can cut the time needed for this phase of the model industrialization process in half.

"The new version of Modaris has enabled us to save around 15% more time in our pattern-making activity compared to the previous version," said Silvio Cattarin, Design Office Manager for Tessilform, an Italian company known for its Patrizia Pepe brand of women's wear. "On grading alone we have accelerated the process by an extra 10%, and we have reduced the time necessary to finalize models by more than 20%."

Modaris ExpertPro: An entirely original approach that takes collection development optimization even further



As part of the Modaris range, Modaris ExpertPro offers companies a whole-process approach to pattern-making that deals with the garment and product line development process in its entirety. Pattern makers can create intelligent links between the different elements of a garment in order to speed up the construction and finalization of models, thereby eliminating repetitive verification tasks and ensuring optimal garment quality.

At the crossroads of design and production, this unique task-oriented pattern-making solution facilitates the rapid creation of product ranges and patterns for all garment types—lingerie, suits, men's and women's pants, children's wear, swimwear, uniforms, and work clothing—from the simplest to the most complex, from ready-to-wear to *haute couture*. Drawing on best practices for working methods, Modaris ExpertPro is a real performance accelerator for pattern-making teams. It can halve the time needed for model development and enables companies to re-use 80% of pattern pieces created in future collections. As a result, Modaris ExpertPro frees up time that pattern makers can spend on tasks other than pattern development, such as design or work with suppliers. It is no coincidence that every company currently operating in the luxury sector in France has adopted this method and Lectra's solution.

In addition to its new dependencies concept, Modaris ExpertPro V6R1 features a concept which is unique on today's market: advanced functions enable users to create certain pattern elements such as waistbands, pockets, and facings in a way that can almost be called automatic. This approach, the first of its kind, reduces the time necessary to produce certain garment parts by up to 50%.

"Modaris ExpertPro V6R1 enables us to save a considerable amount of time during our pattern "fine-tuning" phase. Despite the increasing complexity of our models, the risk of error has been even further reduced, along with the number of verifications necessary. This is achieved through an improved pattern structuring system and a reduced possibility of mistakes when making modifications," said Claude Marchand, Head of Lise Charnel's internal Lectra Services Department, a French brand of high-end luxury lingerie.

Modaris: compatible with Windows Vista®

Like all new versions of Lectra software, Modaris is compatible with the Microsoft Windows Vista® operating system.

In line with Lectra's customer support strategy, Modaris is accompanied by a range of high value-added professional services provided by Lectra's business and solutions experts.

About Lectra

Lectra is the world leader in integrated technology solutions that automate, streamline, and accelerate product design, development, and manufacturing processes for industries using soft materials. Lectra develops the most advanced specialized software and cutting systems and provides associated services to a broad array of markets including fashion (apparel, accessories, footwear), automotive (car seats and interiors, airbags), furniture, as well as a wide variety of other market sectors, such as the aeronautical and marine industries, wind power, personal protective equipment. Lectra serves 23,000 customers in more than 100 countries with 1,500 employees and \$292 million in 2008 revenues. The company is listed on Euronext Paris.

For more information, please visit www.lectra.com

® Modaris is a registered trademark of Lectra SA, France.

® Windows Vista is a registered trademark of Microsoft.